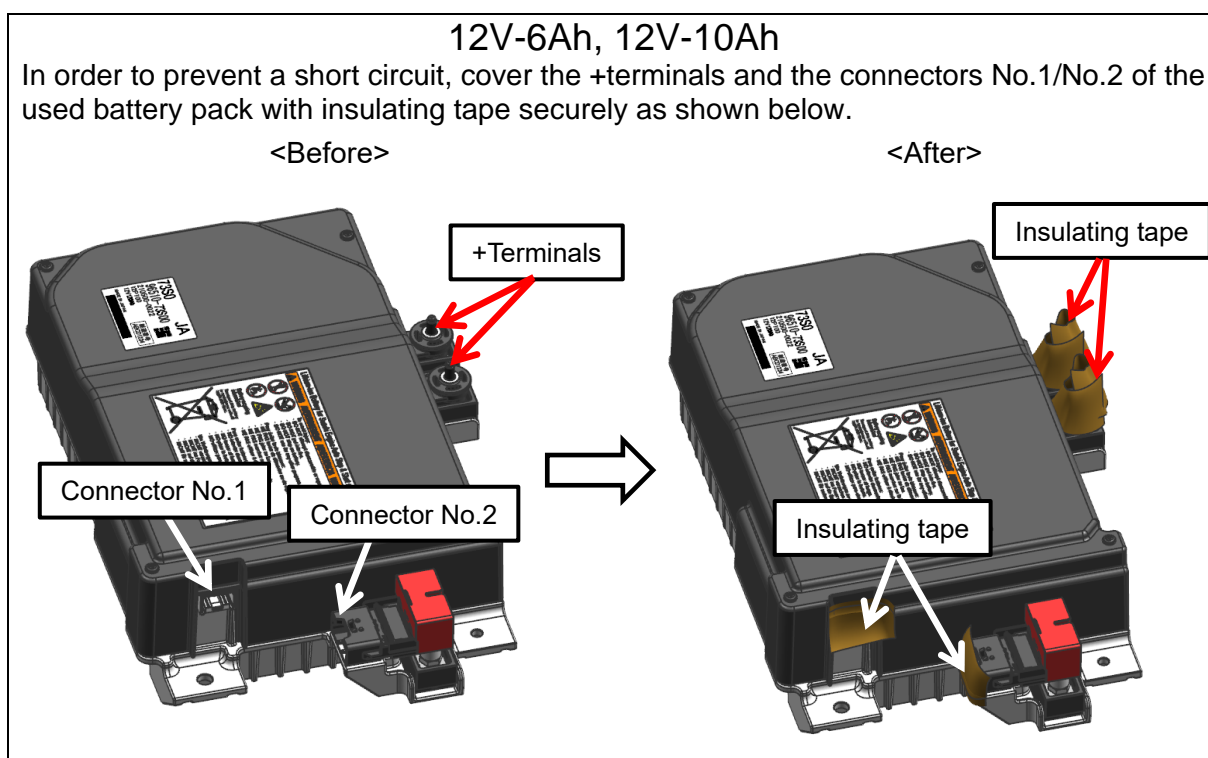
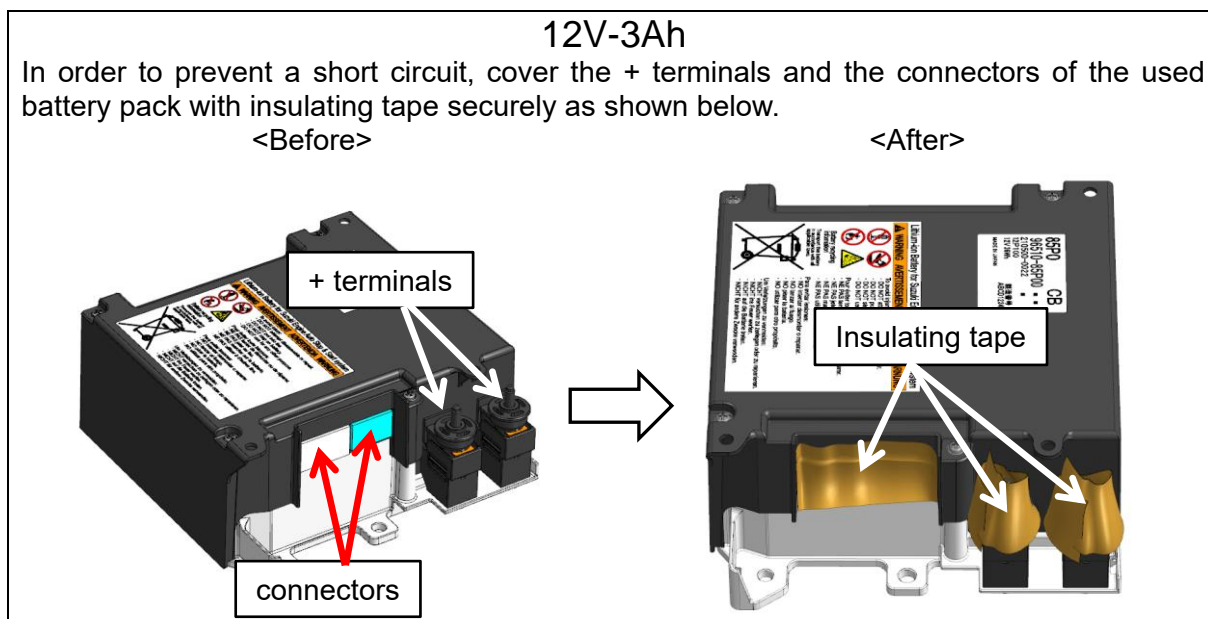


Handling Manual for used Lithium-ion Battery pack 12V-3Ah(36Wh), 12V-6Ah(72Wh), 12V-10Ah(120Wh)

When the battery pack is replaced or removed from the vehicle, the used battery pack requires special treatment in accordance with EU directive 2006/66/EC and/or the laws in your region/country. Please follow the instructions below.
Also, consult the applicable service manual for the replacement.

1. Prevention of a short circuit:



2. Used battery pack Storage:

The following provides guidelines to store the used battery pack after removal from the vehicle:

Guidelines to store the used battery pack	
1	Do not stack the battery packs. Do not place anything on the battery pack.
2	Store the battery pack where it is kept dry and is not exposed to high temperatures, fire and direct sunlight.
3	Protect the battery pack from mechanical loads and damage (punctured or crushed).
4	Keep the battery pack away from water and rain.
5	Never place directly on the floor.
6	Always store the battery pack in its normally installed orientation, never invert.
7	Store the battery pack in well ventilated areas.
8	Only store battery pack which are sufficiently insulated against short circuiting.

This battery pack contains about **150ml(12V-3Ah)**, **250ml(12V-6Ah)**, **400ml(12V-10Ah)** of petroleum class water-insoluble liquid. Store the battery pack properly according to all applicable laws in your region/country based on the total amount of petroleum.

3. Used battery pack Packaging:

- (1) In case of a non-damaged battery pack, pack the battery according to all applicable laws in your region/country.
- (2) In case of a damaged battery pack, please follow the instructions given by the Suzuki distributor in your country.
- (3) Please check the following items of the used battery pack before packaging.

Items to check before packaging and shipment	
1	Battery pack is not wet by water. No leakage of liquid inside battery pack.
2	No fuming, no fire, no fever of battery pack.
3	Battery pack does not suffer damage, deformation, crack, corruption and is not dismantled.
4	Terminals and connectors are insulated by insulating tape.
5	There is no other abnormality.

4. Used battery pack Transport:

Please transport the used battery pack according to all applicable laws in your region/country.

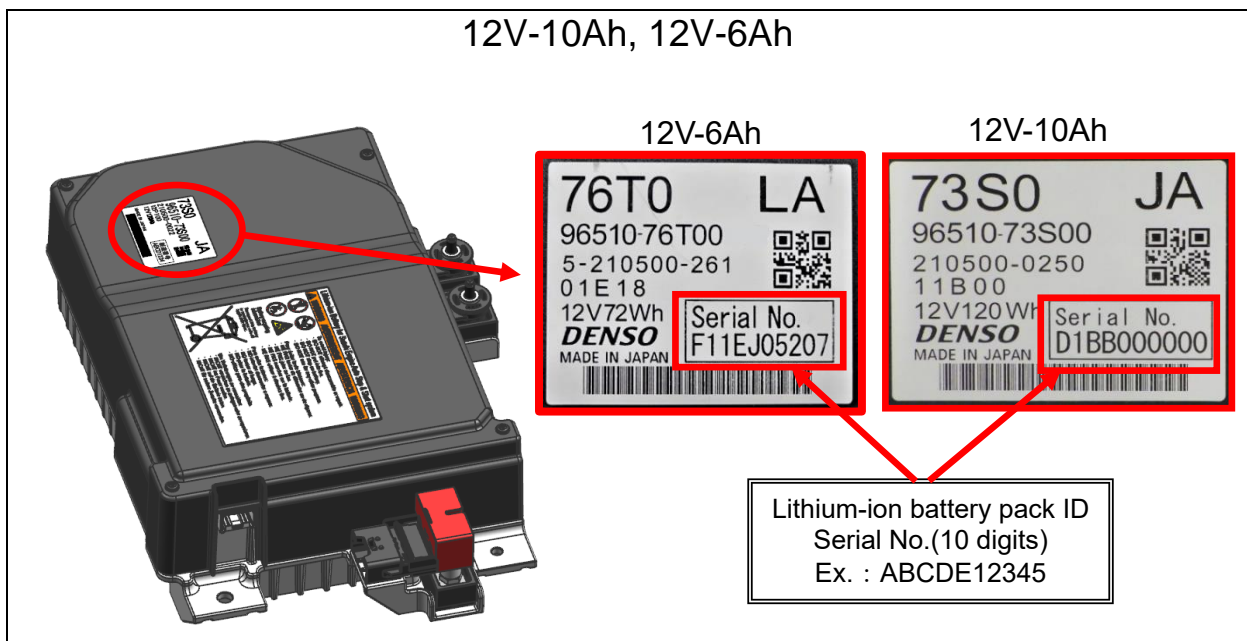
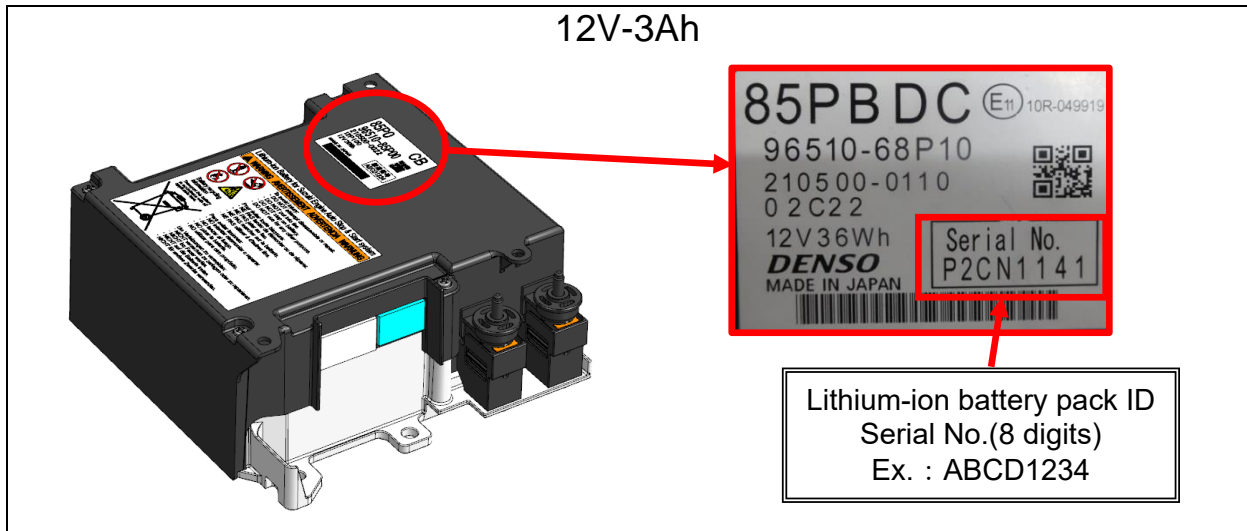
5. Used battery pack Disposal for recycling:

Dispose of the used battery pack properly according to all applicable laws in your region/country. Please contact the Suzuki distributor in your country for inquiries or request disposal of the used battery pack for recycling.

6. Specification of the lithium-ion battery pack:

	12V-3Ah	12V-6Ah	12V-10Ah
Dimensions	about 200 x about 230 x about 85 mm	about 390 x about 250 x about 100 mm	
Weight	about 2.6 kg	about 5.6 kg	about 6.5 kg
Voltage	12 V		
Capacity	36 Wh	72 Wh	120 Wh

7. Serial No. of battery pack



* Please send **The Serial No. Report of Lithium Ion Battery** to the Suzuki distributor in your country (Europe Only).