



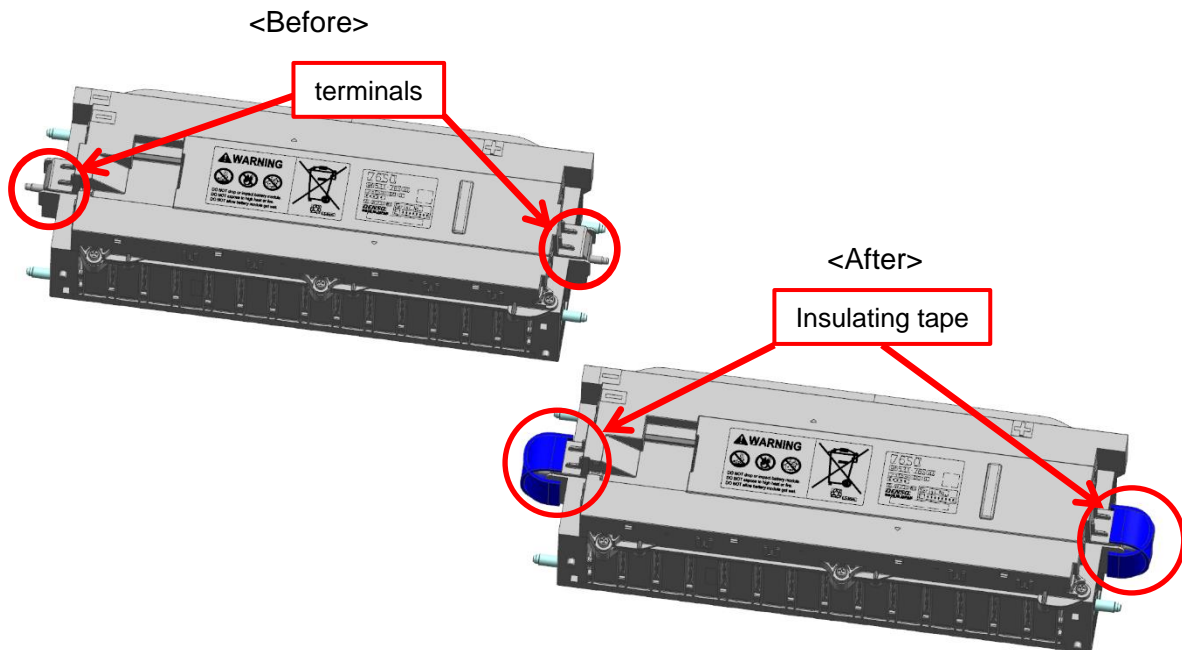
English

Handling Manual for used Lithium-ion Battery module (35V-6Ah)

When the battery module is replaced or removed from the vehicle, the used battery module requires special treatment in accordance with EU directive 2006/66/EC and/or the laws in your region/country. Please follow the instructions below.
Also, consult the applicable service manual for the replacement.

1. Prevention of a short circuit :

In order to prevent a short circuit, cover the terminals of the used battery module with insulating tape securely as shown below.



2. Used battery module Storage:

The following provides guidelines to store the used battery module after removal from the battery pack:

	Guidelines to store the used battery module
1	Do not stack the battery modules. Do not place anything on the battery module.
2	Store the battery module where it is kept dry and is not exposed to high temperatures, fire and direct sunlight.
3	Protect the battery module from mechanical loads and damage (punctured or crushed).
4	Keep the battery module away from water and rain.
5	Never place directly on the floor.
6	Always store the battery module in its normally installed orientation, never invert.
7	Store the battery module in well ventilated areas.
8	Only store battery module which are sufficiently insulated against short circuiting.

This battery module contains about 700 ml of petroleum class water-insoluble liquid. Store the battery module properly according to all applicable laws in your region/country based on the total amount of petroleum.

3. Used battery module Packaging :

- (1) In case of a non-damaged battery module, pack the battery module according to all applicable laws in your region/country.
- (2) In case of a damaged battery module, please follow the instructions given by the SUZUKI distributor in your country.
- (3) Please check the following items of the used battery module before packaging.

Items to check before packaging and shipment	
1	Battery module is not wet by water. No leakage of liquid inside battery module.
2	No fuming, no fire, no fever of battery module
3	Battery module does not suffer damage, deformation, crack, corruption and is not dismantled.
4	Terminals are insulated by insulating tape.
5	There is no other abnormality.

4. Used battery module Transport :

Transport the used battery module according to all applicable laws in your region/country.

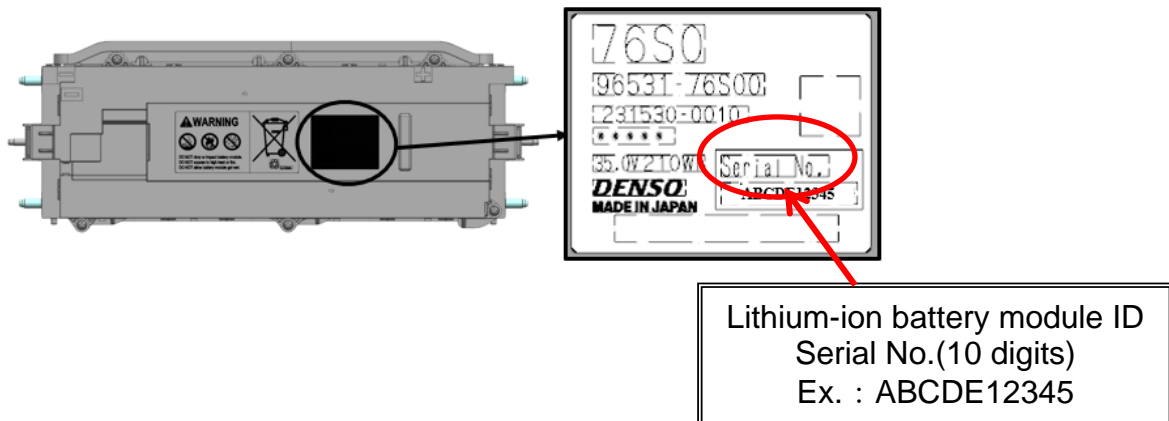
5. Used battery module Disposal for recycling:

Dispose of the used battery module properly according to all applicable laws in your region/country.

Please contact the SUZUKI distributor in your country for inquiries or request disposal of the used battery module for recycling.

6. Specification of the lithium-ion battery module :

- Dimensions: about 430 x about 156 x about 95 mm
- Weight: about 6.3 kg
- Voltage: 35 V
- Capacity: 210 Wh

7. Serial no. of battery module :

* Please send **The Serial No. Report of Lithium Ion Battery** to the SUZUKI distributor in your country.