



English

SWIFT SPORT

SHVS Mild Hybrid System Lithium-ion Battery (48V-350Wh) Dismantling Manual

CAUTION:

Servicing SHVS system involves a danger of electric shock.
For precaution, use insulation tools and gloves.

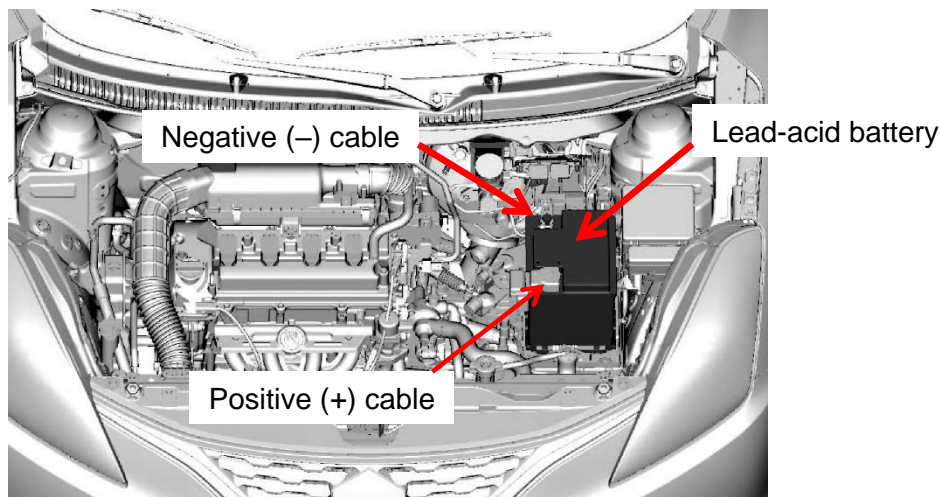
NOTICE:

Lithium-ion battery consists of high precision parts and can be easily damaged by large shock.
Handle lithium-ion battery carefully and do not expose it to large shock.

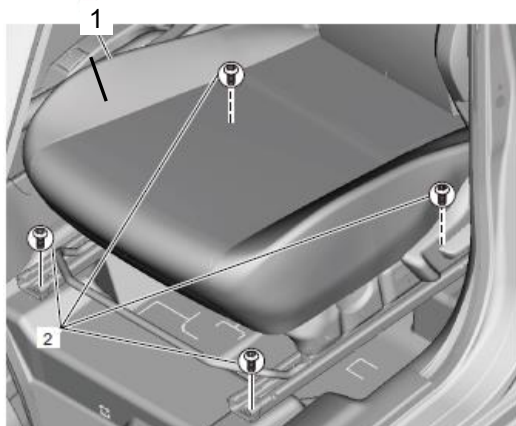
- 1) Set front wheels in straight ahead position.
- 2) Set ignition "OFF" and keep ignition "OFF" for 3 minutes.
- 3) Disconnect the negative (–) cable from lead-acid battery.
- 4) Disconnect the positive (+) cable from lead-acid battery.

By disconnecting the cables from the lead-acid battery, as a safety mechanism, the lithium-ion battery will shut off its power circuit.

The figure below is for reference.



- 5) Wait for at least 90 seconds after performing Step 4).
- 6) Disconnect the connector from the right-side front seat.
- 7) Remove the 4 mounting bolts (2) and remove the right-side front seat (1).

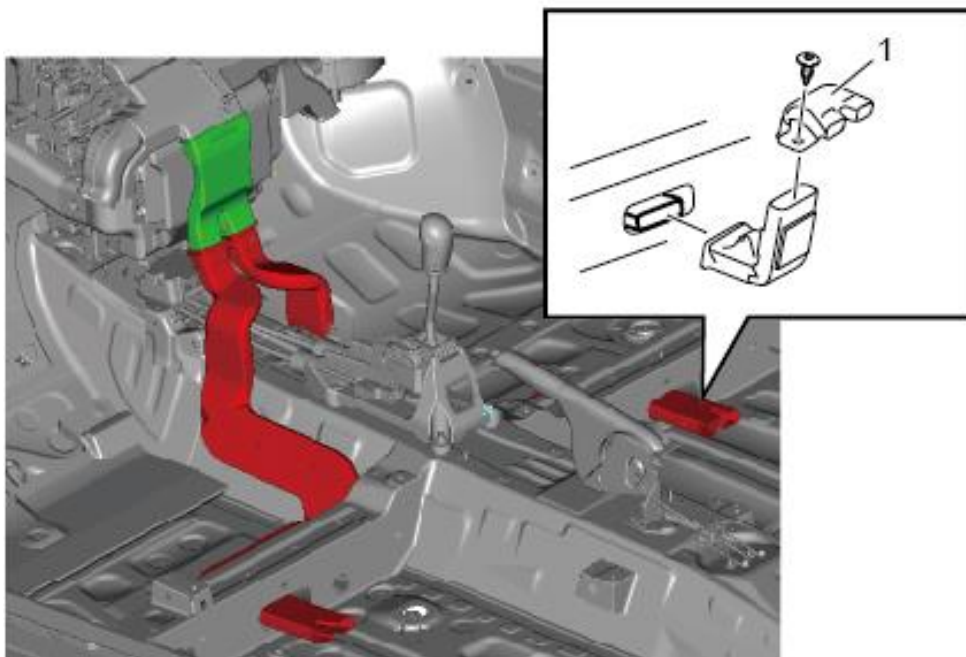


*

The left figure shows the left-side front seat.

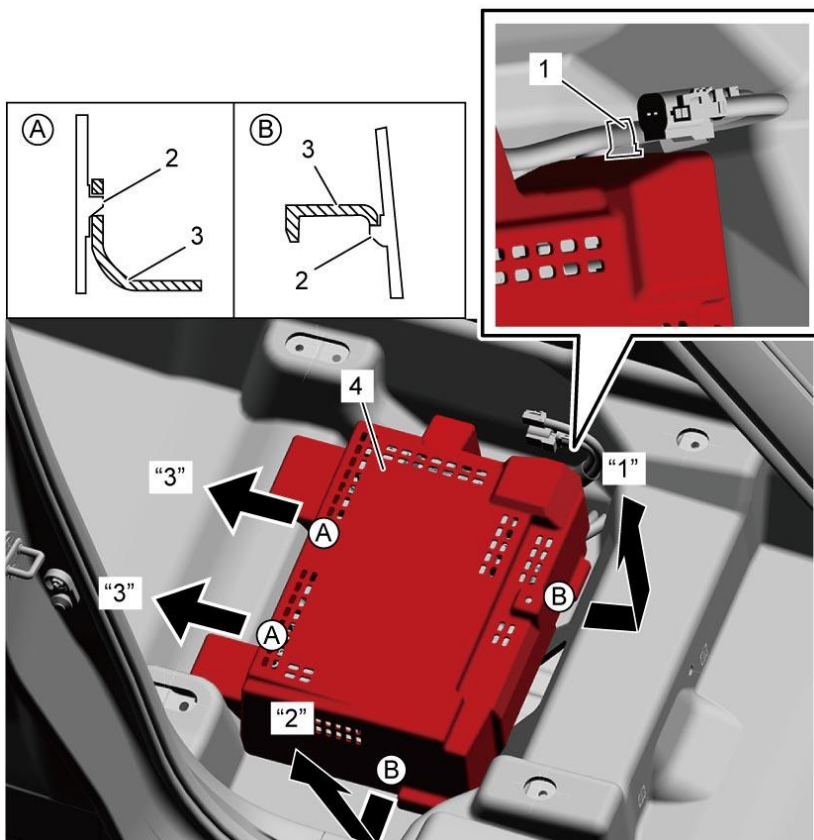
However, you can understand how to remove right-side front seat by this figure.

8) Remove the right rear duct No3 (1).



9) Disconnect the harness clamp (1).

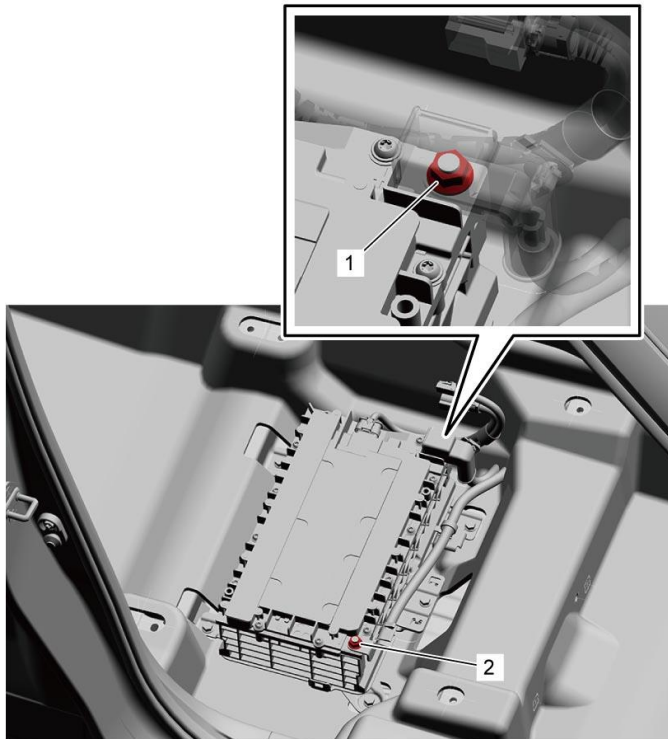
10) Release the hooks (2) of the lithium-ion battery cover (4) from the lithium-ion battery holder (3) in numerical order ("1" – "3") and remove the cover.



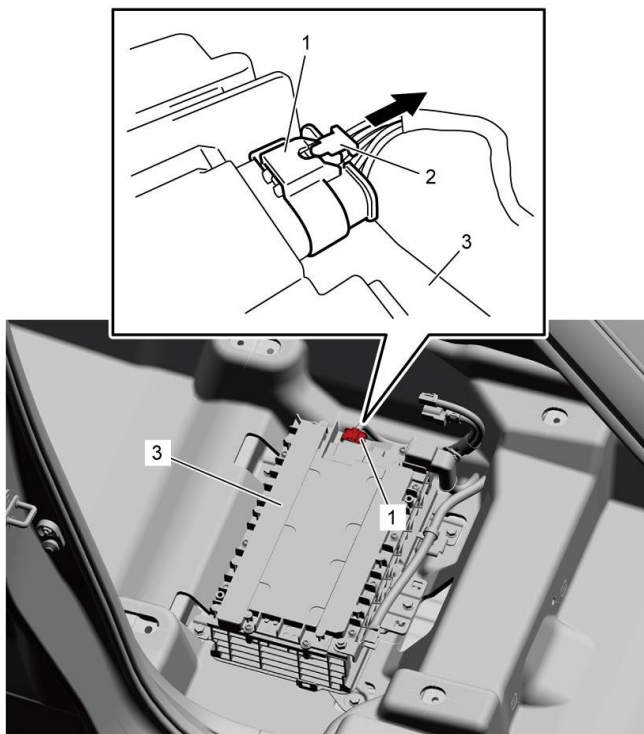
- 11) Check the terminal voltage between the “48V+” terminal (1) and the “48V–” terminal (2) is lower than 5V.

NOTE:

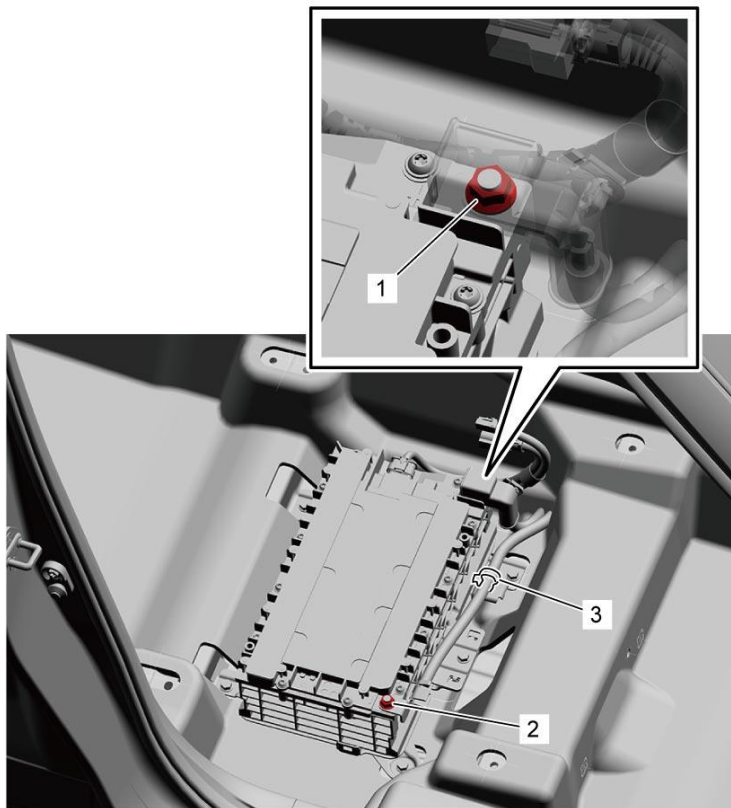
If the voltage is still higher than 5 V, check it again in 15 minutes.



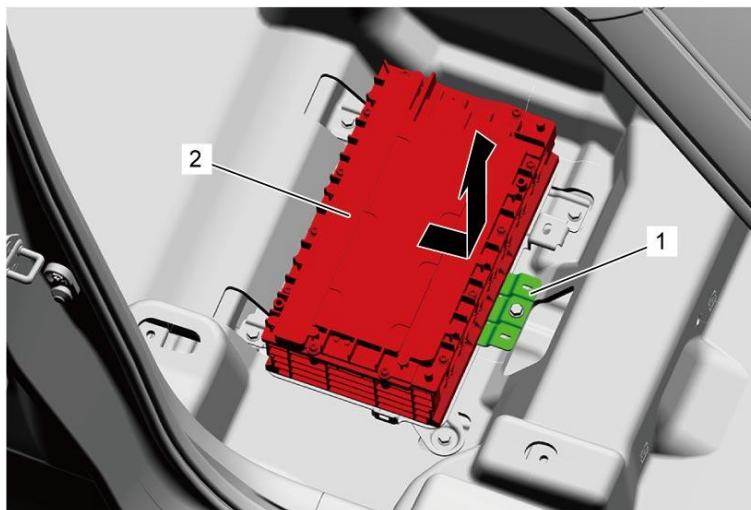
- 12) Disconnect the lithium-ion battery connector (1) as follows.
- Move the connector lock lever (2) in arrow direction as shown in the figure below.
 - Push the connector lock lever and disconnect the connector from the lithium-ion battery (3).



- 13) Remove the “48V+” terminal nut (1) and the “48V-” terminal nut (2), and then remove the cables.
- 14) Remove the “48V-” cable clamp (3).



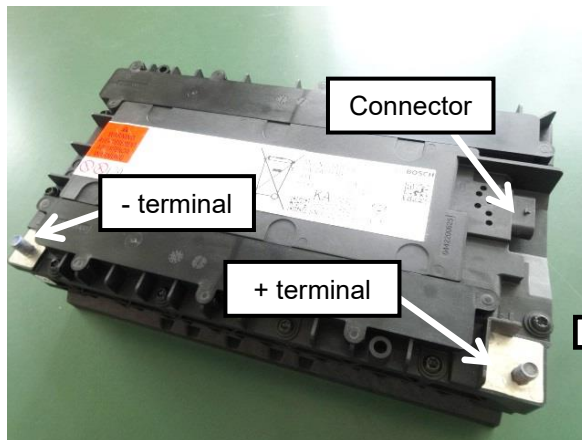
- 15) Remove the lithium-ion battery bracket (1) and remove the lithium-ion battery (2) in arrow direction.



18) Prevention of a short circuit :

In order to prevent a short circuit, cover the +/- terminals and the connector of the removed lithium-ion battery by insulating tape securely as shown below.

<Before>



<After>

