



Pearl Grace White (Q1S)



Metallic Mat Black No.2 (YKV)



Metallic Mat Stellar Blue (YUA)

### Specifications

Overall length	1,860 mm (73.2 in.)
Overall width	700 mm (27.6 in.)
Overall height	1,140 mm (44.9 in.)
Wheelbase	1,285 mm (50.6 in.)
Ground clearance	160 mm (6.3 in.)
Seat height	780 mm (30.7 in.)
Curb mass	115 kg (253.6 lbs.)
Engine type	4-stroke, 1-cylinder, air-cooled, SOHC
Bore x stroke	52.5 mm x 57.4 mm (2.1 in. x 2.3 in.)
Engine displacement	124 cm <sup>3</sup> (7.6 cu. in.)
Compression ratio	10.3 : 1
Fuel system	Fuel injection
Startersystem	Electric + Kick

Lubrication system	Forced feed circulation, Wet sump
Transmission	CVT
Suspension	Front: Telescopic, coil spring, oil damped Rear: Swingarm type, coil spring, oil damped
Rake / trail	26° 30' / 89 mm (3.5 in.)
Brakes	Front: Disc Rear: Drum
Tires	Front: 90/90-12 44J, tubeless Rear: 100/80-12 56J, tubeless
Ignition system	Electronic ignition (transistorized)
Fuel tank capacity	5.5 L (1.5 / 1.2 US / Imp gal)
Oil capacity (overhaul)	0.8 L (0.2 / 0.2 US / Imp qt)

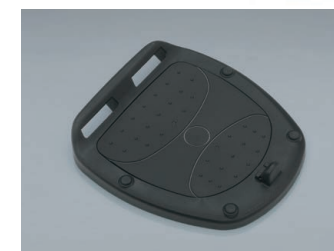
\*European Spec. shown

### Genuine Accessories



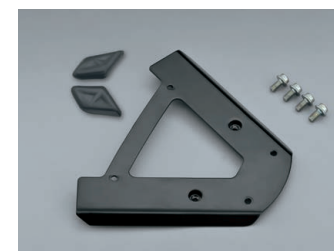
#### Plastic Top Case (27L)

A top case adorned with the SUZUKI logo. Fits a full-face helmet.  
\*Separately sold Top Case Adapter Plate and Top Case Bracket are required for installation.  
\*Maximum load: 3kg / Case capacity: 27 liter \*Helmet of certain shape may not fit.



#### Top Case Adapter Plate

Attaches to the separately sold Top Case Bracket in order to install Plastic Top Case (27L).



#### Top Case Bracket

Replaces the standard rear cover to provide a mounting base for installing Top Case Adapter Plate. Required for installation of Plastic Top Case (27L).



#### Cushion for Top Case

Provides well-cushioned padding where the passenger's back meets the top case.  
\*It is not a backrest. Do not put a passenger's weight on it.  
\*Separately sold Plastic Top Case (27L) is required for installation.

Standard and optional equipment available may vary for individual markets. Please enquire at your dealers, as specifications and illustrations may refer to models not available in your region. SUZUKI MOTOR CORPORATION reserves the right to change, without notice, prices, colors, materials, equipment, specifications and models, and also to discontinue models.

All photographs in this leaflet were taken with relevant permission. Images of the vehicles without number plates on public roads are composite photos.

- Always wear a helmet, eye protection and protective clothing.
- Enjoy riding safety.
- Read your Owner's Manual carefully.
- Never ride under the influence of alcohol or other drugs.



# BURGMAN

## STREET 125



### Suzuki Motor Corporation

300 Takatsuka-cho, Chuo-ku, Hamamatsu-shi, Shizuoka 432-8611 JAPAN  
www.globalsuzuki.com

BURGMAN STREET 125 (UB125LMM7) Product Information  
99999-XXXX-XXX Apr. '26



# Elevate Your Everyday

Unique styling and sophistication offer you a level of riding pleasure and quality you won't find elsewhere in the class. The BURGMAN STREET 125 leverages its superior fusion of comfort, performance and fuel efficiency to bring you a satisfying riding experience and practical convenience in everyday use. By every measure, the BURGMAN STREET 125 stands ready to elevate your everyday.



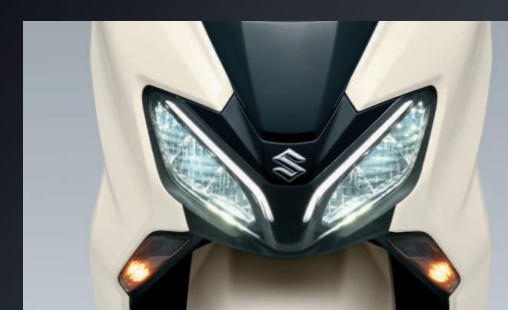
# Sleek and Modern

A sophisticated fusion of sharpness and elegance evokes anticipation of the riding pleasure that awaits you. Curvaceous bodywork cut by sharp lines tightens up the overall appearance to realize an emotional expression of dynamic beauty and potential. The result is a sleek, modern look that conveys elegance with broad appeal.



## Body-mounted windscreen

The compact windscreen shields you from wind and the elements, while its new dark smoked finish adds an extra touch of elegance to its visual appeal.



## LED headlight and LED position lights

The body-mounted headlights were updated to realize a significant increase in illumination range and contribute to greater reassurance when riding at night. New LED position lights complement the distinctive split headlight design, elevating the stylish appeal of the face by presenting even illumination along their length.



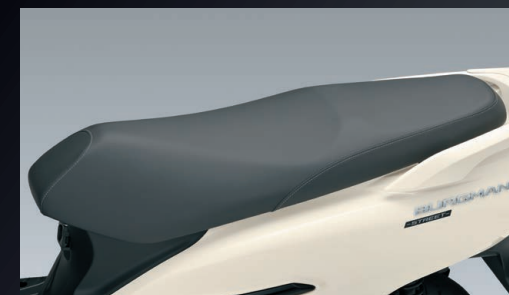
## LED rear combination light

An update to the LED rear combination light with integrated LED turn signals heightens the taste of elegance afforded by the tail section's styling. It is positioned above the new outer lid that conceals the petrol cap to create a clean and highly functional design.



## Distinctive emblems

The new side panel BURGMAN nameplates adopt more evenly spaced, upright letters to present a mature, upscale feel. This raised lettering and the Suzuki logo in the front center feature an attractive metallic finish.



## Comfortable, stylish seating

The stylish new seat design features a long, spacious seat that maximizes rider and passenger comfort. Its carefully crafted shape makes it easy to plant both feet on the ground when stopped, while still offering ample ground clearance. The material covering the seat has a smooth, pleasing texture that delivers a balance between grip and rider comfort.



## Attractive, functional grab bar

The large grab bar that runs along the back of the seat is easy for the passenger to hold on to for extra reassurance and comfort. Color coordinated with the body and designed to allow the owner to mount an optional top case, the new design enhances the overall look of quality and luxury.

\* Note: To mount an optional top case, the grab bar's cover must be removed and optional attachments are required.



## Aluminum pillion footrest

The pillion footpegs fold out to offer your passenger a comfortable ride, and tuck away neatly when not in use. Lighter, longer and lower-positioned, the new footpegs provide solid footing while enhancing passenger comfort.



## Stylish, efficient muffler

The stylish new upswept muffler features a more compact body design that heightens the BURGMAN STREET 125's luxurious charm. All components upon which water might accumulate are made from stainless steel, and drain holes were added to enhance durability.



# The Best of Both Worlds

The BURGMAN STREET 125 does much more than put a smile on your face as a practical daily commuter. It is engineered to deliver powerful low-end torque and satisfying acceleration, all while achieving optimum fuel economy and EURO 5+ compliant low emissions. Easy to handle and highly maneuverable, the BURGMAN STREET 125 proves its ability to excel in most any urban riding situation.



## Efficient, powerful Suzuki Eco Performance (SEP) engine

Suzuki Eco Performance (SEP) is a forward-looking development concept aimed at optimizing all aspects of engine efficiency to bring you a superb balance of environmentally responsible operation and thoroughly satisfying performance. In other words, the SEP engine is part of an overall package built to deliver the best of both worlds. Thoroughly updated for 2026, the new engine produces greater torque at low- to mid-range speeds, contributing to even more responsive acceleration. Its powerful torque excels in stop-and-go traffic, even when carrying a passenger. And it achieves this while complying with EURO 5+ emissions regulations. Measures implemented to ensure fuel efficiency include the adoption of an electromagnetic steel plate for the stator core, a change in the fuel injector mounting angle, modification of the CVT settings, and a lowered idling rpm. The regulator/rectifier with an integrated condenser enables you to kick-start the BURGMAN STREET 125, even if its battery runs low\*. Moreover, this reliable single-cylinder powerplant is easy to maintain and economical to run. Its air-cooled design also makes it compact and lightweight, helping to realize nimble handling and maximum comfort and utility.

\* If the battery voltage drops too low for the ECM and keyless system to activate, it may prevent you from starting the engine with the kick-starter.



## Cast aluminum wheels fitted with quality tires

The BURGMAN STREET 125 rides on large 12-inch DUNLOP D307 N tubeless tires mounted on cast aluminum wheels that are designed to perform as well as they look. These 12-inch tires combine with optimized suspension settings to deliver superior running performance, positive grip on wet surfaces and a smooth ride, even on cobblestones.



## Suzuki Easy Start System

Start the engine with one quick push of a button and off you go. A single switch that controls both the start and stop functions is conveniently located on the right handlebar for easy operation.



## Combined Brake System

Suzuki's Combined Brake System supports well-balanced braking by distributing braking force to both the front and rear wheels when the left brake lever is operated. Stable stopping power is provided by a 190mm diameter disc brake in the front and a 130mm drum brake in the rear.

\* The Combined Brake System is intended only to assist braking operation. We strongly recommend that riders normally use both brake levers to control the front and rear brakes when braking.



## Rear brake lock

A switch on the left brake lever locks the rear wheel to keep the BURGMAN STREET 125 in place when you stop momentarily at a street light or in traffic. This enhances comfort and convenience by preventing it from rolling when the side stand is extended and by letting you remove both hands from the handlebars briefly while waiting to proceed.

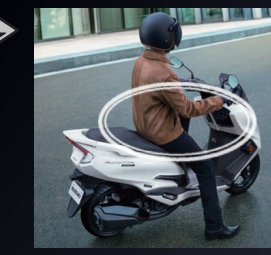
\* We do not recommend using the rear brake lock lever when parking or stopping on slopes. If the brake lock is released unintentionally, the scooter may become unstable and tip over.



# A Rich Complement of Utility Features

The luxury treatment extends to offering a full set of utility features that make the riding experience even more convenient and pleasant. Enjoy the ability to carry everything you need along with you, to recharge your smartphone while you're out, and to move about the city with greater peace of mind.

## Keyless system



This system lets you start the engine, open the fuel lid, or access the underseat utility compartment simply by carrying the remote fob on your person. That means there is no need to fumble around in one's pockets or backpack to locate the actual fob.

## Lost key fob alert

If you drop the remote fob or it ceases to communicate with the BURGMAN STREET 125, an indicator appears on the LCD panel to warn you.

## Answer-back function

A button on the remote fob activates the answer-back function, causing the turn signals to flash so you can more easily find your BURGMAN STREET 125 in a crowded parking lot.



## Multi-function main switch

The multi-function main switch provides integrated control over the seat opener, steering lock, and fuel lid lock functions. This is far more convenient than when these functions are scattered across different switches, as is the case on many other scooters.



## Concealed tail-mounted fuel cap

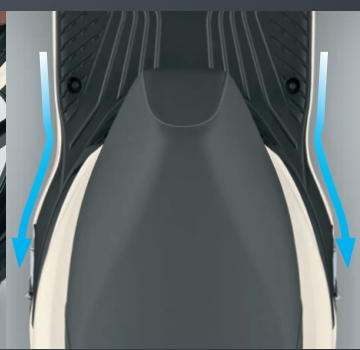
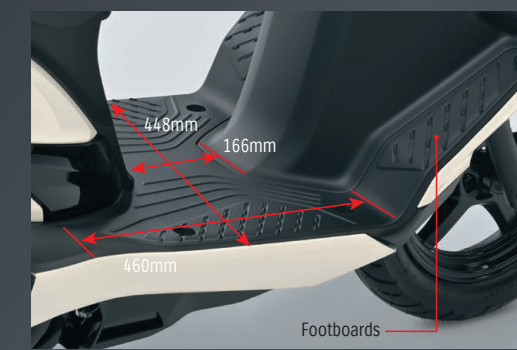
The updated BURGMAN STREET 125 adopts an outer lid positioned below the rear combination lamp that conceals the petrol cap. The lid can be opened easily using the multi-function ignition switch. It opens and closes slowly and smoothly thanks to a damper mechanism, and is designed to let you rest the filler cap in the inside of the lid while refueling.



## Underseat storage

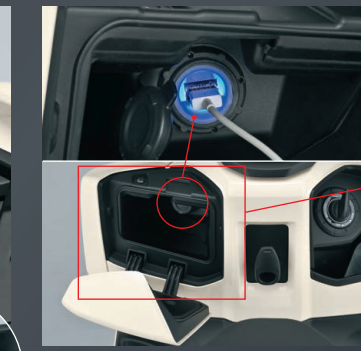
Boasting a spacious design and upgraded capacity of 25.9L, the underseat utility compartment can now accommodate a full-face helmet, shopping bags, rain gear or other items. This provides convenient space to store such items and protect them from the elements. Two strong hooks inside the compartment's front lip make it easy to securely hang a pair of helmets when parking.

- \* The weight limit for items in the underseat compartment is 10kg.
- \* Do not use the compartment to store items that are fragile, valuable, dangerous, or susceptible to heat.
- \* Helmets of certain shapes may not fit in the underseat compartment.



## Roomy foot space and dedicated footboards

Both long and wide, the floorboard is designed to provide you with plenty of room to adjust your feet and find a comfortable riding position, even when carrying a passenger. Dedicated footboards up front offer you extra space to extend your legs for greater comfort when cruising. Every detail of the new floorboard pattern was designed to provide a good grip under foot, and to not be tiring on long rides.



## USB Outlet

A 2A USB outlet positioned inside the covered left-side front compartment lets you charge your phone wherever your journey takes you. An attractive blue LED surrounding the outlet remains lit as long as the ignition is turned on, making it easy to locate, especially at night or in dark conditions.

- \* Be aware when using the USB outlet while the engine is idling or stopped that it may drain the battery.
- \* Failure to observe the following instructions may result in damage to the scooter or connected device.
- Do not connect any electronic device other than a smartphone.
- Do not use when washing the scooter or when it is raining.
- \* Reattach the cap when the USB outlet is not in use.

## Practical front compartments

On the left side is a covered compartment that houses the standard-equipment 2A USB outlet and is large enough to accommodate a large-screen smartphone. On the right is a quick-access inner pocket that offers enough space to hold a 500ml beverage or some other small item you may want to keep close at hand.

- \* Stowed items are shown for illustrative purposes only.
- \* The weight limit for each compartment is 0.5kg.
- \* Do not use the front compartments to store items that are fragile, valuable, dangerous, or susceptible to heat.
- \* Do not keep electronic equipment in the front compartments while riding as the vibration may cause damage.
- \* Items may be displaced depending on their shape and riding conditions.
- \* Be sure to keep the front left compartment lid closed while riding.



## Dual utility hooks

A pair of sturdy hooks let you hang various types of bags, including shopping bags, above the floorboard. This expands your ability to carry items and provides greater convenience than accessing the underseat storage. The back hook can be locked to better secure items, and can be folded out of the way when not in use.

- \*The weight limit for each hook is 1.5kg.

## Side stand interlock system

A switch attached to the side stand prevents the engine from starting while the stand is down, thereby protecting you from carelessly starting off with it extended. And the BURGMAN STREET 125 is equipped with both a center stand and a side stand as standard equipment.

# Connectivity



## 4.2-inch full-color multi-information display

The BURGMAN STREET 125 is equipped with a large TFT LCD screen that features a clean and intuitive layout. Not only does it keep you fully aware of all the onboard systems, settings and real-time operating status, but also provides added functionality when connected to your smartphone. It can even notify you if a preset speed is exceeded.



Day mode



Night mode

You can maximize visibility at any hour and in any riding situation by switching either manually or automatically between the day (white) and night (black) display modes. A brief custom animation that plays when the display comes on will heighten your anticipation of the ride ahead.



## SUZUKI RIDE CONNECT+ APP

Once downloaded and installed, you can use Suzuki Ride Connect+ App to connect your smartphone running iOS or Android™ and access a variety of useful information and services on both the color TFT LCD screen and your phone.



\* Apple and the Apple logo are trademarks of Apple Inc., registered in the U.S. and other countries. App Store is a service mark of Apple Inc., registered in the U.S. and other countries.  
\* iOS is a trademark or registered trademark of Cisco in the U.S. and other countries and is used under license.  
\* Android, Google Play and the Google Play logo are trademarks of Google LLC.

\*Android/iOS compatible

## Placing the information you want right before your eyes

Examples of useful information that Suzuki Ride Connect+ App displays on the 4.2-inch multi-information display include call and message notifications, call information, real-time map guidance, traffic jam alerts, and real-time weather information and weather alerts for your current location.

### Smartphone interfacing

When your smartphone is connected, enjoy the convenience of checking its signal strength\* and remaining battery level right on the TFT LCD screen, along with the Bluetooth® connection status.

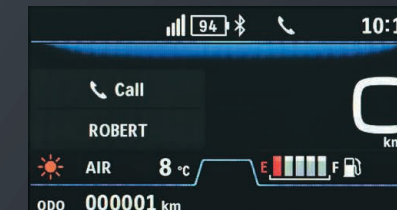
\* Available only on Android devices  
\* The Bluetooth® word mark and logos are registered trademarks owned by Bluetooth SIG, Inc.

### Incoming notifications

Enjoy getting notified of incoming calls and messages, as well as scheduled calendar events as you ride, and being to respond immediately.

### Speed warning

This function helps you ride more confidently by alerting you when your speed of travel exceeds the preset limit you have selected in the app.



## A wealth of information at your fingertips

You can view a variety of useful information right on your smartphone screen. This includes data pertaining to the status of your BURGMAN STREET 125, such as the parking location, odometer, tripmeter, daily, monthly and single trip fuel consumption, single trip average speed, oil, tire and battery maintenance information, and more.

### Auto reply

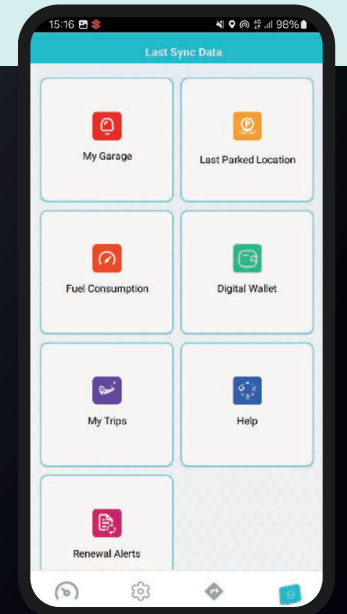
Ride without worrying about missing a call. Auto reply automatically declines incoming calls on your behalf and sends the caller a pre-set response message instead.

### Parking position locator

The location where your smartphone was last paired with the BURGMAN STREET 125 is recorded as its parking position. This makes it easy to find your ride later, even in large parking lots, etc.

### License and insurance expiration date management

You can set expiry date alerts and save images of your driver's license and up to 3 pieces of other identification, such as insurance cards, etc.

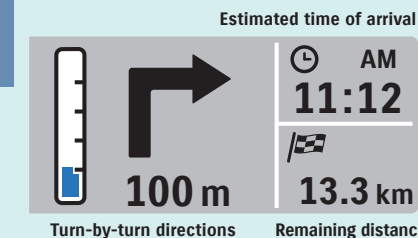


### Full navigation

The app displays your current position on your smartphone screen, along with route guidance on a map of the area that also indicates points of interest and other useful information.

## Turn-by-turn navigation

This app-linked navigation function displays directional arrows and distance indications to guide you to your destination. It also presents you with the estimated arrival time, remaining distance and traffic jam alerts. When using a headset, it offers voice guidance from the app.



### Ambient temperature and weather

Enjoy the convenience of seeing the current temperature and weather conditions on the display, wherever you are travelling.



### Rainfall and traffic jam alerts

When the navigation system is in use, an alert appears when there are rain clouds or traffic problems along your selected route.

