

Description : **BUMPER SET**

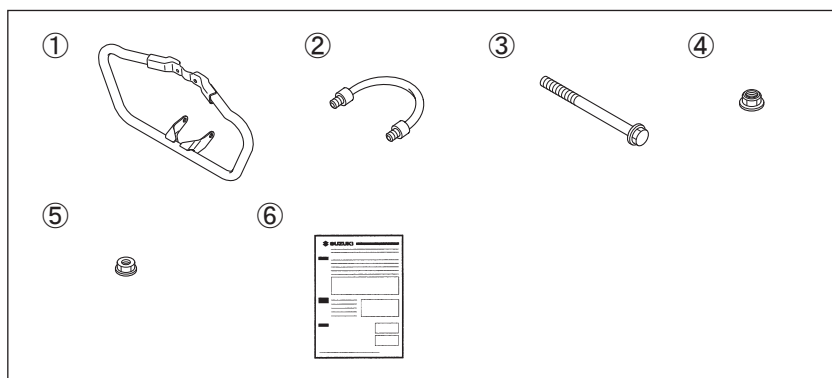
Part Number : 94200-2081*

Applications : DS250

Installation Time : 0.7 Hours

Contents

Ref.	Description	QTY
①	Bumper	1
②	Bumper Hook	1
③	Bolt	1
④	Nut(M8)	1
⑤	Nut(M6)	2
⑥	Installation Instructions	1



Tools Required

Ref. Description

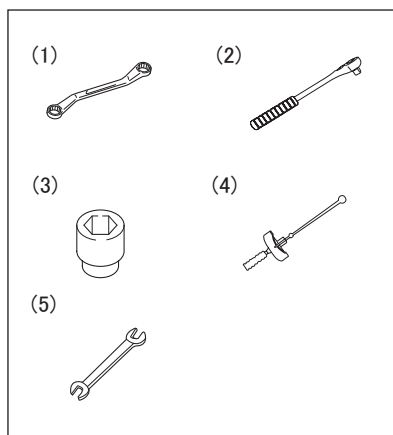
(1) Wrench(10, 12mm)

(2) Ratchet handle

(3) Socket(10, 12mm)

(4) Torque wrench

(5) Open wrench(12mm)



Important**▲ WARNING / ▲ CAUTION / NOTICE / NOTE**

Please read this manual and follow its instructions carefully. To emphasize special information, the symbol **▲** and the words **WARNING**, **CAUTION**, **NOTICE** and **NOTE** have special meanings. Pay particular attention to messages highlighted by these signal words:

▲ WARNING

Indicates a potential hazard that could result in death or serious injury.

▲ CAUTION

Indicates a potential hazard that could result in minor or moderate injury.

NOTICE

Indicates a potential hazard that could result in vehicle or equipment damage. ➞ ⓘ

NOTE

Indicates special information to make maintenance easier or instructions clearer. ➞ ⓘ

**Precautions
for
Installation**

1. Check that the kit includes all the parts listed on the first page.
2. Check each part in the kit for scratches or any form of damage.
3. Park the vehicle on a level ground.
4. Remove the ignition key from the switch and store it in a safe place.
5. Disconnect the negative (–) cable from the battery.
6. Protect any items removed or to be installed from scratches by placing them on a soft cloth first before putting them on the ground.
7. Use care not to cause any damage to the body of the vehicle during installation of the accessory.

**Tightening
Torque**

Tighten bolts to the torque indicated in the right table as standard value unless otherwise explicitly specified.

The value shows conventional on “4” marked bolt tightening torque. For other bolts not listed in the table, refer to the service manual.

Diameter (mm)	Tightening Torque		
	N·m	kgf-m	lbf-ft
5	3.0	0.3	2.0
6	5.5	0.55	4.0
8	13.0	1.3	9.5
10	29.0	2.9	21.0

i

Be sure to refer to the DS250 service manual, when removing or installing STD parts.

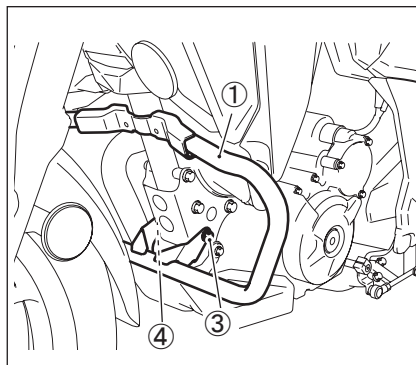
* STD parts = Component parts of SUZUKI motorcycle

i

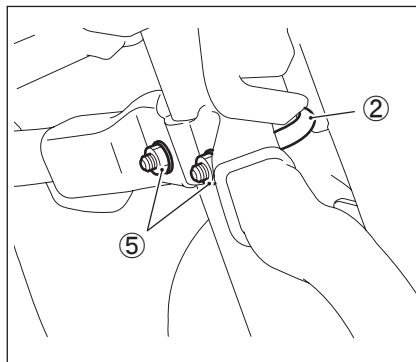
- When installing the Bumper, cover a plastic part of a vehicle around mounting point by any cloth or protection tape.
- When installing the Bumper, at first, temporarily install and fix appropriate position of the Bumper by bolts and nuts, and then, be sure to tighten each bolt and nut to the specific tightening torque.

Installation Installation of the Bumper

1. Temporarily install the Bumper ①, the Bolt ③ and the Nut ④.



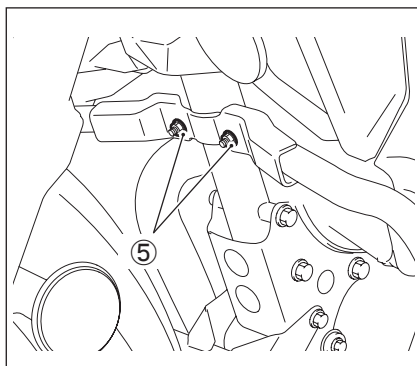
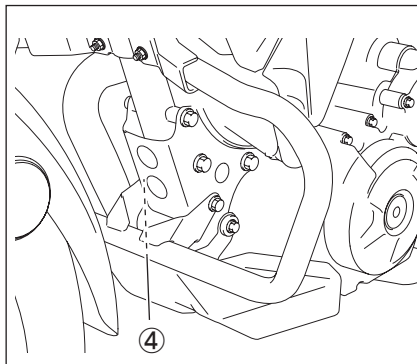
2. Temporarily install the Bumper Hook ② and the Nuts ⑤.



3. Tighten the Nuts ④ and ⑤ to the specified torque.

Tightening torque:

- ④ : 31N·m
(3.16 kgm, 22.87 lbf.ft)
- ⑤ : 10N·m
(1.02 kgm, 7.38 lbf.ft)



**Care
and
Maintenance**

⚠ CAUTION

- Do not move or lift up a motorcycle by holding the Bumper.
- Do not put rider's foot on the Bumper.

ⓘ

Check followings before riding

- After all processes finished, be sure that all component parts are fixed appropriated position and tightened firmly.
- The Bumper doesn't contact with body parts.
- Inspect the tightening of each bolt or screw regularly and retighten these as needed.